



Waimea Alumni Foundation
 P. O. Box 478
 Waimea, HI 96796

Non Profit Org
 US Postage
 PAID
 Waimea, HI
 Permit No. 6

RETURN SERVICE REQUESTED



WAFF Board Members

L-R Sitting: Basilio Fuertes, Katie Hardwick, Naoko Ho, Puanani Gonsalves, Irene Muraoka, Roy Miyashiro
Standing Row 2: Joni Hamada-Patricio, Blanche Suga, Janice Nitta, Alice Brown, Priscilla Badua, Placido Valenciano, Adela Ochinang
Row 3: Lynne Tamashiro, Mahina Anguay, Leo Anguay, Russell Hasegawa, Alvin Kyono

waimea Alumni & Friends Foundation

▼ JUNE 2017 ISSUE



PRESIDENT:
Janice Nitta

VICE PRESIDENT:
Brycen Hiraoka

SECRETARY:
Katie Okihara Hardwick

TREASURER:
Alvin Kyono

president's message ▼

Aloha, Waimea Alumni & Friends,

Mahalo to all of our generous supporters as the Foundation continues to meet the **GOALS AND OBJECTIVES OF OUR STRATEGIC PLAN :**

I would like to extend special thanks to my fellow board members and their families for all the hard work and good cheer they have provided over the years - Priscilla Badua, Alice Brown, Basilio Fuertes, Puanani Gonsalves, Katie Hardwick (Secretary), Russell Hasegawa, Brycen Hiraoka (Vice President), Naoko Ho, Leila Kuboyama, Alvin Kyono (Treasurer), Roy Miyashiro, Irene Muraoka, Adela Ochinang, Joni Patricio, Russell Hasegawa, Blanche Suga, Lynn Tamashiro and Placido Valenciano.

Our board meets on the second Tuesdays of each month at the Waimea Neighborhood Center. Meetings begin at 6:30 pm. Alumni & friends are welcome.

Janice F. Nitta | 2017 WAFF President

MAJOR ACCOMPLISHMENTS:

- As of Dec, 2016, the Foundation has returned nearly \$500,000 to Waimea High School in the form of grants for school projects (\$150,000), scholarships (\$60,000 from WAFF; \$125,000 in memorial scholarships from individuals, families and classes, and fundraising opportunities for school-related programs (\$150,000).
- This year, we are in the process of sound-proofing the cafeteria to make it more meeting-friendly (\$30,000) and will be providing 9 scholarships to the Class of 2017. *(See more information about our 2017 scholarships in another article)*
- The 2017 Carnival enabled school-related programs to raise more than \$18,000.
- Since 1996, the Foundation has recognized 98 individuals who have contributed to their school and/or community with the Spirit Award.
- Our roster of Lifetime Members has surpassed the 400 mark, and is still climbing.

MAJOR CHALLENGES:

Five years have passed since the Foundation adopted the Strategic Plan. The year 2020 is the target year for meeting our Goals and Objectives.

- The Foundation has chosen to focus on Goal 3 – Strengthen Finances. The Foundation's goal is to build a Trust Fund to \$300,000 so that funds generated by its interest will provide funds for school projects beyond what the State provides. To meet this goal, we need to raise at least \$35,000 a year for the next 4 years.

If you can help, please send a donation to
 Waimea Alumni & Friends Foundation,
 P.O. Box 478, Waimea, HI 96796.

◀ 2016 Spirit AWARDEES



MAHINA GONSALVES ANGUAY
Class of 1978

Recipient of 2016 Tokioka Excellence In Education Leadership Award, praised as "visionary, community minded and having an entrepreneurial spirit". Principal at WHS since 2013, made outstanding improvements in ACT composite scores, literacy and overall graduation rates. WHS was among the top ten public schools statewide. Implemented STREAM, Science, Technology, Resources, Engineering, Arts/Humanities and Math program. Mahina attended UH Manoa with an athletic scholarship (Golf) and graduated with a degree in Journalism. She worked as a Dorm Advisor at Kamehameha Schools, later receiving a degree in Special Education from the University of Phoenix. Worked as a Sped Teacher at Farrington High School. Entered the ACE program with DOE for Administration Training and interned at Dole Middle and Puuhale Elementary. Returned to Kauai as a Vice Principal at Kauai High School before being assigned to her Alma Mater. Driven and hardworking to a fault Mahina goes above and beyond to help her students, teachers, staff and community partners.

LAUREL LOO

Kamehameha Class of 1978

Quietly serves her community as a servant leader. Laurel is a partner in her own firm, Shiramizu Loo & Nakamura and serves as a per diem judge in the District Court and Family Court of the Fifth Circuit. Laurel attended UH Manoa as a Journalism major. She was Editor in Chief of the campus paper Ka Leo O Hawaii. After graduation, she worked as a reporter for the Honolulu Advertiser before graduating with her Juris Doctorate from the William S. Richardson School of Law. While there she was the University of Hawaii's Law Review Business Editor. Laurel's legal career began as an associate with Damon Key Char & Bocken doing commercial transactions and litigation. Laurel worked as a Deputy Prosecutor then, Deputy County Attorney for the County of Kauai. Laurel has served her community on the following boards, Kauai Humane Society, YWCA of Kauai, The Lihue United Church Parish Council, Former Director of the Hawaii State Bard Association, and the Vice President of the Hawaii Health Systems Corporation-Kauai Region Board.



JOSEPHINE "JOSIE" PASCUAL PABLO
Class of 1961

Creatively uses her organizational skills, imagination and thinking out of the box to develop a premier Recreational Therapy Department, within the state, at Samuel Mahelona Memorial Hospital. Josie attended Pacific University and the University of Oregon receiving a degree in Recreational Therapy. In 1986 she began her career as the first Director of Recreational Therapy at SMMH. Josie has maintained a high quality of life for long term care residents, initiating, a Petting Zoo, Filipino Fiesta, Obon Festival, Fishing Expeditions, Christmas Light Parade, Renewal of Wedding Vow Celebrations, Lydgate Beach Swimming Outings, and Cancer Awareness Walk. Josie blends many community organizations with County and State officials participating in improving the quality of life for residents and kupuna at Samuel Mahelona Memorial Hospital.

WAFF Treasurer's Report MAY 9, 2017

Checking Acct Book Balance @ 5/09/2017	\$77,564.81
GWN Securities Inc.	
Balance of May 9, 2017	\$165,650.41
Total Assets @ May 9, 2017	\$243,215.22

Alvin Kyono
Alvin Kyono
TREASURER

WAFF UPCOMING EVENTS

The Board meets on the second Tuesdays of each month at the Waimea Neighborhood Center. Meetings begin at 6:30 p.m. All alumni & friends are welcome to attend.

◀ **GENERAL MEMBERSHIP MEETING & AWARDS LUAU**
Saturday | August 19, 2017 | WHS Cafeteria, 6 pm

◀ **WAFF GOLF TOURNAMENT**
August 19, 2017 | Poipu Bay

◀ **WAFF CARNIVAL**
February | 9-10, 2018 | WHS Front Lawn

WAFF CARNIVAL 2017

After a one-year hiatus, the WAFF Carnival returned to the Waimea High School front lawn in February. Nearly \$20,000 was earned by clubs, parent booster groups and athletic teams in this year's fundraiser. Despite the weather forecast for rain, the weather held up for the carnival (The rain held up until after 9:00 pm on Friday night, and Saturday night was rain-free).

CONSTRUCTION Chairperson Basilio Fuertes and his volunteers managed to take care of set up and clean up of tents, tables and equipment. Thanks to John Jacinto (plumbing), DOW Volunteers, WHS Volunteers, WHS Athletic Department, Jon & Braden Kobayashi, Bobby Tanita, Jeff Emoto, Roy Miyashiro, club advisors and students (Major Vic Aguilar and the JROTC, Chlorie Igne and Cheer Team, Canoe Club, WHS PTSO, WHS Band), Alvin Kyono, Clayton Ueno, Roy Nitta, Stephen Haynes, Scott Hardwick, Ricky Tsuchiya for the hours and hours of labor needed.

EQUIPMENT, SERVICES, SUPPLIES & MANPOWER were provided by our generous supporters - Jon Altomare (banners), Garden Isle Disposal (trash bin), Syngenta (lights), Stephanie Iona (Dow - manpower, publicity), Henry Peralta (portable refrigerator) Firemen from Waimea Station, Jimmy's Sales (paper goods), Rainbow Paints & Fishing Supply (ice), Gordon Harada, Bruce Hiraoka.

Thanks to Chinese Pretzel makers (Katie Hardwick, Irene Muraoka, Janice Nitta, Patsy Nitta, Lynn Tamashiro, Janice Tanita), Bakers (Cosme Amulacion, Cherie Amulacion, Dennis Okihara), Packers (Puanani Gonsalves, Georgette Kopp, Patsy Nitta, Irene Muraoka) and Donors (Ronald Badua, Irene Muraoka, Slim Yamauchi, Carol Kanna, Moana Kaluna, Lynn Rita, Kathy Uyeda) there was lots for sale in the Country Store - cookies, pies and breads, fruits and vegetables, plants and a White Elephant. The WHS FAA program (Greg Harding, advisor) sold some of their fresh produce in the Store. Chairperson Katie Hardwick and volunteers from the Class of 1971 (Russell Hasegawa) manned the **COUNTRY STORE** both nights.

ENTERTAINMENT - MC's Alex and Edwin Vea opened the evening's program with the JROTC Color Guard both nights. Carnival-goers were treated to musical entertainment on both nights. Friday night was Mele and Hula night and Saturday was Country Western night. Thank you to our entertainers - Trybe, Tsunami Taiko, Leinaala Mokihana Jardin's halau, WHS hula dancers, Ryukyukoku Matsuri Daiko Kauai. Between acts, Lucky Number drawings were held.

This year's **FOOD BOOTH** was run by school booster groups - Dinner Plate - WELL/Bayanihan Club (Jasmin Camara/Kristal Daligcon), Project Grad (Lynn Tamashiro), Andagi - WHS PTSO (Ginny Agena), Flying Saucer - Cheer Team (Iris Hesapene), Pronto Pup - WHS Band (Kevin Toma). The Foundation just ran two of the booths, which were manned by alumni classes. Saimin Booth - Class of 1978 (Leila Kuboyama), Class of 1981 (Joni Patricio); Soda/Water Booth - Class of 1968 (Jeff Emoto), Classes of 1965/70 (Blanche Suga/Janice Oyama)

School clubs ran the **GAMES BOOTHS** and had a chance to earn funds for their organizations The JROTC did the Kiddies Gamers (Vic Aguilar, advisor), Duck Pond (Joanne Parongao), HOSA (Teri Freitag) did the Bean Bag game, Spanish Club (Julie Kellogg) did Darts and Spanish toys, ROV (Stu Burley) sold popcorn, etc, and Kilohana Hoe Wa'a (Canoe Club - Keith Castaneda) ran the Baseball & Basketball games. In addition, Got Games ran some games and jumpers and there was the Build-a-Bear activity.

Members of the Class of 1981 (Joni Patricio) assisted Treasurer Alvin Kyono in the **SCRIPS BOOTH**.

There was a good variety of items for bid in the **SILENT AUCTION** - craft items, rounds of golf, hotel accommodations, appliances, gift baskets, gift certificates, and more. Thanks to the generous donations from Anahola Granola, LL, Grove Farm Company, Captain Andy's, Lawai Beach Resort, P S & D, Salty Wahine Gourmet Hawaiian Sea Salts, Ishihara Market, Lappert's Hawaii, Eating House 1849 by Roy's, Auntie Lili'oi Products, Kauai Community Federal Credit Union, Kaha Lani - Castle Resorts & Hotels, Kauai Golf Management - Puakea, Marriott's Waiohai Beach Club, Poipu Bay Golf Course, Mailalani's Kauai, Shrimp Station, Cake Pops by Toni, The Mane Event, Stick with Laurien, Kauai Coffee, Big Save/Time's supermarket, Tata Bunga Fuertes, and Gerry's Kauai, Thanks to chairperson Adela Ochintang and to helpers Anthony Vea and Danette Wise for manning the tent.



Thanks to the hardworking WAFF Board and their families for "picking up the slack" and doing everything else that needed doing in order to have a successful carnival - *Priscilla Badua, Alice Brown, Basilio Fuertes, Puanani Gonsalves, Katie Hardwick, Russell Hasegawa, Brycen Hiraoka, Naoko Ho, Leila Kuboyama, Alvin Kyono, Roy Miyashiro, Irene Muraoka, Janice Nitta, Adela Ochintang, Joni Patricio, Blanche Suga, Lynn Tamashiro*

continuation 2016 ANNUAL MEMBERS

- | | |
|-------------------------------|-------------------------------|
| 47 Miyoshi Boxer Matsuda | 73 Debbie Mukai Seret |
| 49 Joe Sadao Matsukawa | 58 Edwin Shintani |
| 55 Stanley Mishima | 58 Hazel Mitobe Shintani |
| 68 Glenda Valenciano Miyazaki | 60 Mary Jane Duque Simao |
| Fr Gayle Mizukami | 60 Diane Nitta Smith |
| 55 Jerry Morimoto | 64 Raymond Souza |
| 59 Susan Chikahiro Morimoto | 56 Rosario Estacio Stewart |
| 48 Susan Fujii Nakamura | 58 Jane Saito Uyema |
| 62 Lawrence Nishihara | 60 Nathallie Pereira Wicker |
| 70 Randy Nordmeier | 57 Ellen Yokoyama Yamada |
| 57 George Paiste | 57 Robert Yamada |
| 57 Sarah Visitacion Paiste | 67 Glenn Yamamoto |
| 63 Diane Navarro Passos | 67 Kathleen Hayashi Yamamoto |
| 76 Tammie Yamase Quinlan | 52 Jeanette Choriki Yoshimura |
| 72 Mercedes Jardin Schlink | 72 Debbie Viquelia Zanders |

DONATIONS

- 59 Alan & Nancy Honda
Fr Ian & Alma Kagimoto
56 Rosario Estacio Stewart (Scholarship)
64 Kiyoto Fujita (Scholarship)
Alice Hisley
48 Harry Hirokawa
72 Mercedes Jardin Schlink
52 Jeanette Choriki Yoshimura
63 Jimmy Nakaya C/O 63
In Memory of Wilfred Iwamoto
In Memory of Gilbert Furtado
50 Virginia Bolosan Besas

- 65 Isabel Parraga
58 Allen Miyakado
58 Howard Matsuda
55 Stanley Mishima
64 Diane Inouye Fukuyama
61 George Shimabukuro
60 Rufus Kaukani
Fr Warren Ishida (Scholarships)
60 Jerry Albarado
65 Merle Yasunaka Asato
72 Craig Hayashi
75 Lynn Ishikawa Hayashi
59 Ellen Yasunaka McDermott
Fr Gayle Mizukami

*Fr = Friend

SCHOLARSHIP RECIPIENTS

This year's scholarships are funded by our 3rd Annual WAFF Golf Tournament and generous donations from members and friends.



SCHOLARSHIP [Rosario](#) | COLLEGE [Creighton University](#) | CAREER GOAL [Nurse Practitioner](#)

ROBYN ACOB daughter of Roel & Cris Acob, will be receiving the Guillermo & Ignacia Estacio Scholarship. Her desire to help people has encouraged her to select Creighton University with the goal to become a Nurse Practitioner. She excels in academics, athletics and school and community service and will be one of the Valedictorians for the Class of 2017. In addition to a rigorous academic schedule, Robyn has been active in leadership positions such as Class Vice President and a Student Body Kauai District Student Council (KDSC) Representative. She has also participated in varsity sports and numerous service club and community organizations. She has donated hundreds of hours in volunteer activities as part of the Waimea High School Junior Reserve Officer Training Corps (JROTC) and Big Brothers Big Sisters of Kekaha. She has been a caring and positive Mentor of her "Little Brother" and works with additional children, when needed.

SCHOLARSHIP [WAFF](#) | COLLEGE [Northern Arizona University](#) | CAREER GOAL [Filmmaking](#)

A four-year veteran of Waimea High School's MTV production, **VINCENT ALTOMARE**, son of John (C/o 91) & Narlyn Altomare, will be attending Northern Arizona University in the fall, studying filmmaking, hoping to pursue a film career back on Kauai. In addition to his involvement in media production, Vincent is an Executive Officer with the JROTC, and has also been involved in KIF soccer, riflery, cross-country and tennis, as well as video rocketry and music. As part of TRYBE (band), he has been a Brown Bags to Stardom and Tri-High Talent Show winner, and is a member of the Starlighters Jazz Band. As a member of the Kauai All Island Band, he will be playing at the National Memorial Day Parade in Washington, DC.



SCHOLARSHIP [WAFF](#) | COLLEGE [Seattle University](#) | CAREER GOAL [Pediatrician](#)

Recipient of numerous academic, athletic and leadership awards, **BREEANN CAYABAN** daughter of Fred (C/o 84) & Georgeatte Galicinao-Cayaban (C/o 84) will be attending Seattle University to study Nursing, with the goal of becoming a pediatrician. BreeAnn is a Valedictorian for the Class of 2017. Despite a rigorous academic schedule, BreeAnn has managed to participate in KIF cross-country, soccer, basketball, and track, has served in numerous leadership positions and given many hours in community service. She was class president for three years, and is this year's Student Body President. She has represented her school at conferences at the district, state and national levels, including the Hawaii State Student Conference, the KIUC conference in Washington D.C. and the NRECA (National Rural Electrical Cooperative Association) Youth Leadership Council and the National HOSA (Health Occupations Students of America) convention in Nashville, Tennessee.

SCHOLARSHIP [Kiyoto Fujita](#) | COLLEGE [University of Portland](#) | CAREER GOAL [Biomedical Engineer](#)

ELIJAH NISHIHIRA, son of Mr. & Mrs. Jerry Nishihira, will be receiving the Kiyoto Fujita Scholarship, and will be attending the University of Portland, studying Biomedical Engineering. As a multi-sport athlete, Elijah has participated in KIF cross country, baseball, soccer and tennis. He also enjoys serving his school and community and participating in numerous sports-related camps both as a participant and an instructor. As part of his church's outreach program, a program of a week-long camp for the children on the South and West side of the island, Elijah was one of the head coaches this past summer. He led a team of junior coaches for the week. He had the pleasure of going to Thailand this summer to teach children and adults about sports. He worked tirelessly in the extreme heat and monsoon rains to serve the Thai children. He even learned some of the language to better communicate with the children.



Waimea Alumni & Friends Foundation (WAFF) is proud to present scholarships to nine outstanding members of Waimea High School Class of 2017. These students have demonstrated academic excellence, perseverance in athletics, leadership in class and student government offices and committees and unselfish hours in school and community service.

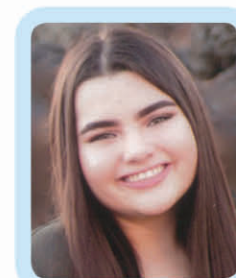


SCHOLARSHIP [Takeshi Fujita Society](#) | COLLEGE [Washington State University](#) | CAREER GOAL [Teacher](#)

The Takeshi Fujita Society Scholarship is being presented to **ASHLEY MARIE PASCUAL**, daughter of Rodolfo & Imelda Pascual. Inspired by the many teachers and faculty members who have made a positive impact on her life, Ashley will be attending Washington State University to major in education, with the goal of becoming a Guidance Counselor in order to, in turn, make an impact on the lives of others. Respectful, committed, motivated and hard working, Ashley has challenged herself by taking college courses through Kauai Community College, and has still been extremely involved in her school and community. She is a member of three varsity sports – riflery, tennis and cross-country. She is a member of numerous school clubs and student body committees, usually serving in positions of leadership. This year, she was elected as Student Body Secretary. She has also been with Big Brothers, Big Sisters for the past three years.

SCHOLARSHIP [WAFF](#) | COLLEGE [University of Washington, Seattle](#) | CAREER GOAL [Lawyer](#)

A scholar and leader, **SHARAY RAPOZO**, daughter of Shasta (C/o 97) and Roy Rapozo (C/o 91) of Makaweli, plans to attend the University of Washington at Seattle with plans to study Pre-Social Science (Law, Societies & Justice) with the goal of becoming an attorney. Sharay has been Class Secretary for 4 years and a member of the JROTC program, serving as Battalion Adjutant this year. She has also been active in numerous service clubs, often in positions of leadership. Sharay has also chosen to participate in the health-related co-curricular activities - Science Olympiad, Science Bowl and HOTS/HOT Club. Sharay has been a mentor for Big Brothers Big Sisters of Kauai at Kekaha Elementary School this year, and has recruited her peers to volunteer their time as well.



SCHOLARSHIP [Daniel Suga Memorial](#) | COLLEGE [UH Hilo](#) | CAREER GOAL [Personal Business](#)

The Daniel Suga Memorial Scholarship is being presented to **KIARA RUIZ**, daughter of Marleen (C/o 93) and Keith Ruiz (C/o 91) of Kekaha. Kiara will be attending the University of Hawaii at Hilo to pursue a degree in Business Administration. She hopes to one day own her own business. A dedicated student-leader, Kiara is involved in many clubs and activities on campus and with her church. Off campus, she is very much involved in the High School Rodeo Association and the All Women Rodeo Association, where she has won several events and placed high enough to qualify for national standings. She is also active with 4-H and is a hula dancer for Halau Hula O Hali'eleo.

SCHOLARSHIP [WAFF](#) | COLLEGE [Pacific University](#) | CAREER GOAL [Medical Doctor](#)

Hoping to contribute to the war on cancer through research of the genetic code, **BAILEE M TAEZA**, daughter of Matthew and Lani Taeza (C/o 85), will be attending Pacific University Forest Grove, Washington to study Bioinformatics with an emphasis in Pre Med with the goal to become a Medical Doctor specializing in internal medicine. A well-rounded individual, Bailee is an outstanding student, a three-sport KIF athlete and a tireless student leader. During her tenure at Waimea High School, she has challenged herself by enrolling in numerous Gifted and Talented and AP courses. She is also enrolled in two dual credit Math courses with KCC. She participated in volleyball, golf and riflery, has served as Class President for three years, district council representative and school committees. In addition to all of this, Bailee has been serving her community by volunteering as a Youth Leader at her church, assisting with the Feeding the Homeless programs at Holy Cross and the Salvation Army for many years, and volunteering in the radiology department at the Kauai Veterans Memorial Hospital for four years. Her ability to prioritize and her level of maturity makes her an outstanding student.



SCHOLARSHIP [Yuso-Lillian Ishida](#) | COLLEGE [Oregon Institute of Technology](#) | CAREER GOAL [Biomedical Engineer](#)



LEEANA TAMASHIRO, daughter of Lynne (C/o 85) and Leslie Tamashiro, receives the Yuso & Lillian Ishida Scholarship and will be attending Oregon Institute of Technology in the fall with the goal of becoming a Pediatric Nurse. Inspired by the nurses who have provided care and comfort to family members, Leeana believes that nursing is the career that will help her fulfill her dream of assisting others. Leeana's work-ethic has been demonstrated on both the athletic field and in the classroom. A 4-year veteran of the volleyball team, she was voted MVP by her coaches for her leadership and team spirit. The list of service activities Leeana has participated in demonstrates her interest in service to others. She is a member of the Interact Club, a service-learning organization, has been a team captain for Relay for Life Kauai, been a member of Project Grad, and volunteered at the Salvation Army and at the Kauai Veterans Memorial Hospital with activities for the residents.

lifetime members

- | | | | | |
|---------------------------------|--------------------------------|----------------------------------|----------------------------------|--------------------------------|
| 55 Folgencia Domingo Abrams | 64 Clifton Hashimoto | 66 Alvin Kyono | 43 Kaoyo Watase Otsuka | 63 Carmen Mae Fuertes Vierra |
| 61 Larry Agena | 46 Mabel Kawakami Hashisaka | 70 Maile Kagawa Lam | 51 Kenneth Oyadomari | 70 Gwen Nonaka Vueter |
| 66 Nolan Ahn | 60 Valentine Hataishi | 59 Janet K. Bal Landfried | 74 Joanne Ho Parongao | 2010 Joshua Waalani-Matsusaka |
| 61 Wallace Akagi | 67 Karen Munechika Hatley | 75 Corrine Kubota Lau | 65 Dr. Isabel Parraga | 2010 Kaulana Waalani-Arroyo |
| 92 Misty Uilani Smith Albarado | 72 Craig Yahashi | 65 Cynthia Tomomitsu Lee | 81 Joni Hamada Patricio | 2005 Kelsie Waalani |
| 51 Agonio Albino | 75 Lynn Ishikawa Hayashi | 48 Robert A. Lee Jr | 80 Robert A. Patricio | 89 Renae Waalani |
| 65 Melvin Ando | 64 Stephen Haynes | 64 Arnold Leong | 58 Roland J. Pereira | 87 Richard Waalani Jr. |
| 78 Mahina Gonsalves Anguay | 42 Allison Hiroko Kabutan Higa | 44 Michael Madreau | 66 Diane Broccardo Pittro | 61 Richard Waalani Sr. |
| 64 Fay Fujita Arakaki | 58 Robert Higashi | 60 Steven Manaday | 59 John G. Robley | 85 Rileene Waalani |
| 66 Bernice Goto Asakura | 63 Gwendolyn Ching Hill | 49 Helen Martin Martin | 63 Dolores Mier Roldan | 91 Ryan Waalani |
| 55 Winifred Leong Au | 56 Kay Izumi Hill | 55 Kenji K. Marugame | 73 Crystal Valenciano Rowe | 53 Matilda Nawai Warkentiin |
| 66 Edward Bal | 57 Janice Nitta Hilten | 48 Bernice Namie Masaki Okino | 62 Lynn Hashimoto Sabate | 49 Mark Yoshio Watase |
| 81 Elsie Batangan | 64 Glenn Hinazumi | <i>In Memory by Joyce Masaki</i> | 67 Jay Sakai | 52 Richard Watase |
| 60 Alice Hayselden Brown | 66 Dean Hirabayashi | 51 Helen Masaki | 49 Betsy Yamachika Sakata | 49 Harue Ijima Wiebke |
| 73 Judy Cabanting | 65 Gerald Hirata | 55 Setsuo Masaki | 61 Dennis Sakoda | 68 Amy Okihara Willman |
| 89 Kristie Nitta Canavan | <i>Fr Betty Hirozawa</i> | 52 Barney Mateo | 87 Brad Santiago | 50 Helen Sue Waterhouse Wilson |
| 69 Romy Castillo | 48 Naoko Honzaki Ho | 55 Jane Moriguchi Mateo | 87 Stevette Niau Santiago | 66 Martin Wilson |
| 46 Clemente Ceballos | 66 Diane Moringa Honjiyo | 62 Gloria Yamamoto Matsuba | 73 Clifton Sato | 81 Joyce Miyakado Wilt |
| 66 Glenn Ceballos | 71 Eric Honma | 66 Gene Matsuda | 48 Yoshie Odo Sato | 81 Cornelia Gonzales Works |
| 49 Marie Batis Ceballos | 49 Helen Doi Honnaka | 58 Howard Matsuda | 63 Karen Wong Scharfenstein | 54 Lester Yaguchi |
| 44 Jane Uyeno Char | 89 Julie Ibara | 64 Robert Matsuda | 73 Claire Inazu Seaver | 74 Lauri Okada Yama |
| 41 Shigeko Miyagi Chock | 74 Wayne Ibara | 61 Glenn Matsukawa | 65 Alvin Seto | 59 Vee Miyake Yamafuji |
| 61 Amy Marugame Clise | 48 Sakiko Miyashiro Ichinaga | 62 Dennis Matsumoto | 79 Scott Shimabukuro DDS | 70 Aimee Suzuki Yamamoto |
| 57 Leimomi Bal Crowell | 45 Tad Tadao Iimura | 50 Barbara Waterhouse McCord | 83 Shawn L. Shimabukuro | 49 Akimutsu Yamamoto |
| 64 Clifford Daida | 45 Charles Ijima | 55 Janice Okinishi McGraw | 56 Stanley M. Shimabukuro | 50 George Yamamoto |
| 73 Wendell Dang | 53 Paulina Basa Ikeda | 51 Ailice Sakoda Medeiros | 78 Trent Shimabukuro | 49 Harry S. Yamamoto |
| <i>Fr Sarah Date</i> | 58 Kenneth Ikemoto | 58 Allen Miyakado | 66 Dexter Shimatsu | 72 Lester Yamamoto |
| <i>Fr Stephanie Ishii Davis</i> | 51 Seizan Inamine | 65 Kathleen Ishii Miyake | 55 Arnold Shimazu | 50 Lorraine H. Nagata Yamamoto |
| 64 Brenda Yoshimoto Denny | 47 Tamiko Nonaka Inoue | 68 Kirk Miyake | 75 Dale Shimomura | 44 Tetsuo Yamamoto |
| 93 Corey Denny | 58 Howard Inouye | 65 Russell Miyake | 60 Maurice Shimonishi | 47 Aiko Shimazu Yamamoto |
| 2000 Jeffrey Denny | 55 Wallace J. Inouye | 43 Shigetoshi Miyasato | 59 Roy Shimonishi | 48 June Takahashi Yamamoto |
| <i>Fr Jim Denny</i> | <i>Fr Warren Ishida</i> | 48 Fusao Miyashiro | <i>Fr Clinton Shiraishi</i> | 78 Ross Yamamoto |
| 96 Matthew Denny | 53 Harry Ishihara | 64 Roy Miyashiro | 73 Molly Kuboyama Shiraishi | 66 Dr. Harold Yamase |
| 58 Norma Nomura DeSaegher | 76 Joni Okada Ishihara | 66 Barry Mizuno | 72 Sherman Shiraishi | 58 Elaine Kimura Yanabu |
| 48 Yoshie Harada Dickenson | 43 Ralph Yoshio Ishii | 46 Momoe Kokubo Mondschein | 47 Josephine (Hazel) Victor Soto | 66 Gary Yonamine |
| 76 Lorna Doi | 63 Brian Iwata | 51 Beatrice Ikehara Moreira | 65 Wayne Souza | 46 Miwako Hokada Yorita |
| 47 Mansfield Doi | 56 Daniel Izuka | 67 Glenn Morimoto | 65 Anna Metivier Sprinkle | 52 Saeko Yshitake Yoshida |
| 49 Ruby Emura Doi | 91 Jonelle Pavao Jardin | 53 Harry Muranaka | 91 Laynie Sueyasu | 55 Norman Yoshimoto |
| 47 Sadie Kabazawa Doi | 56 Mazie Matsuda Johnson | 55 Joyce Miike Muranaka | 65 Blanche Izumi Suga | 58 Carol Kouchi Yotsuda |
| 72 Stanley Doi | <i>Fr Ian Kagimoto</i> | 76 Royden Muranaka | 98 Jill Shimatsu Suga | 48 Janice Ogasawara Yuen |
| 77 Steven Doi | 69 Ken Kajihara | 62 Irene Iwai Muraoka | 98 Leilani Costales Suga | |
| 64 Paulette Kokame Edmonston | Takashi Kajihara | 63 Nelson Muraoka | 95 Keith Suga | |
| 72 Crystal Kanna Egusa | 63 Alwyn Kakuda | 75 Dr. Aaron Nada | 99 Kevin Suga | |
| 68 Gail Hashimura Emoto | 52 Donald Kanagawa | 63 Nathan Nagamine | 95 Marla Shimatsu Suga | |
| 68 Jeffrey Emoto | 47 Itsue Okamoto Kanemura | 58 Joyce Akagi Nagata | 93 Scott Suga | |
| 45 Hiroshi Enoki | 55 Alvin Kaneyama | 40 H Barney Nakagawara | 48 Emiko Kubota Sugino | |
| 50 Salvador Esona | 52 Lillian Katsura | 63 Jerry Nakagawara | 66 Sean Keoki Sweeney | |
| 48 Edna Abreu Estrella | 63 Dennis Kauahi | 44 Kikuyo Okamura Nakamura | 56 Eleanor Nakata Takanishi | |
| 76 Janet Kagawa Fong | 60 Rufus Kaukani | 48 Dr. Mitsugi Nakashima | 46 Ikuto Taketa | |
| 74 Randall Francisco | 62 Gail Nitta Kawamura | 72 Ross Nakashima | 55 Kay Tamaribuchi | |
| 60 Basilio B. Fuertes Jr. | 76 L. Masae Kawamura | 43 Masako Omoto Nakata | 85 Lynn Hashimoto Tamashiro | |
| 64 Alvin Fujii | 58 Wallace Kawane | 51 John Nakaue | 50 Florence Koga Tamura | |
| 66 Kathleen Teshima Fujii | 64 Walter Kimoto | 69 Edwin Nakaya | 60 Eunice Ueno Tanaka | |
| 50 George Fujii | 47 Masako Yamamoto Kimura | 63 James Nakaya | 50 Dexter Tsniguchi | |
| 64 Kiyoto Fujita | 59 James Kitamura | 85 Cynthia Garceau Nardini | 43 Eisel Taniguchi | |
| 49 Sadao Fujita | 55 Esther Matsuba Kodani | 87 Marciana Garma Nishida | 65 Clyde Tanita | |
| 66 Merle Okamoto Fukuda | 56 Joyce Shirai Koga | 60 Donald Nitta | 63 Robert Tanita | |
| 67 Nelson Fukuhara | 56 Judith Masuda Koike | 65 Gary Nitta | <i>Fr Janice Tanita</i> | |
| 64 Diane Inouye Fukuyama | 56 Roy Koike | <i>Fr Janice Nitta</i> | 63 Warren Tanita | |
| 63 Gilbert Furtado | 76 Kenn Kojima | 67 Jeffrey Nitta | 60 Gwendolyn Ishida Teragawa | |
| 51 Elaine Hanashiro Ganeko | 87 Sean Kojima | 65 Norman Nitta | 72 Elise Kimura Tittle | |
| 52 Elizabeth Corpuz Gee | 44 Dr. Glenn Megumi Kokame | 87 Vincent Nitta | 86 Allison Fujii Toma | |
| 48 Ritchie Geny | 75 Ronald Kouchi | 48 Kenichi Nomura | <i>Fr Gertrude Kawakami Toma</i> | |
| 63 Dolores Mier Golden | 38 Martha Sialana Kruse | 48 Dorothea Tsuchiya Nomura | <i>Fr Joyce Ozaki Tomonari</i> | |
| 53 Mary Mateo Gentry | 72 Peter Kruse | 75 Darrick Nordmier | 68 Carole Shimatsu Tsuchiya | |
| 58 Pansy Yoshida Goto | 72 Wendy Matsuda Kruse | 47 Epifanio Oroc | 64 Val Tsuchiya | |
| 47 Renji Goto | 50 Mitsuru Kubota | 49 Gregoria Pantohan Oroc | 63 Trudy Date Uechi | |
| 60 Linda Smith Gut | 45 Ryo Kubota | 49 Gladys Tokushige Okada | 46 Shigeru Uehara | |
| 56 David Hamada | 78 Leila Kuboyama | 65 Harris Okamoto | 59 Vivien Hirokawa Urabe | |
| 58 Ernest K. Hamada | 43 Miyono Kunioka | 48 Allen Okamura | 61 Vivian Hamamoto Uwaine | |
| 49 Dr. Paul Hanashiro | 41 Shizumi Kunioka | 40 Sakiko Okada Okihara | 63 Aaron Uyeda | |
| 53 Stephen K.Hanashiro | 68 Vivian Masaki Kunselman | 78 Jan Okinishi | 63 Kathleen Suga Uyeda | |
| 45 Alice Nakano Hanna | 49 Robert Kuribayashi | 70 Danette Okino | 97 Lauren Uyeda | |
| 60 Gordon Harada | 67 Karen Kutaka | 53 Daniel Omakanim | 75 Placido Valenciano | |
| 75 Katie Okihara Hardwick | 63 Linda Ishibashi Kutten | 43 Yaeko Miyashiro Ono | 76 Randal Valenciano | |

Waimea Alumni & Friends Foundation 3rd Annual Golf Tournament

SILVER SPONSORS

– WCIT Architecture (2) Kaiwa Construction, Waalani Enterprise, Dupont Pioneer

BRONZE SPONSORS

– Garden Isle Auto Sales, Earthworks Pacific Inc. Friends of Dee Morikawa, Unko's Kitchen, Ishihara Market, Kuku'i'ula Development, Ross Kagawa, Ron Kouchi

Prize Sponsors

– King Auto center, Cushnie Construction, Pacific Blue Construction, Blanche Suga, Glenn Kagawa, Kauai Community FCU

Hole Sponsors

– KIUC, Garden Isle FCU, Basilio Fuertes, Ron Wood FM 97, Arryl Kaneshiro, Greg Nakata, Garden Isle Disposal, Scott Kouchi, DOW Ag., Chun Family, 808 Support Services, Mel Rapozo

Prize & Gift Donors

– Millilani Golf, Kuku'iolo Golf, Puakea Golf, Poipu Golf, Kiahuna Golf, Hokualea Golf, Kauai Shores, Grand Hyatt Hotel, Kauai Beach Resort, Costco, Walmart, Big Save Market, Aunty Liiliko'i's, Salt Pond Country Store, Pauhana tees

- Next golf tournament will be held the same day of the **WAFF Annual Luau - August 19, 2017.**
- Golf tournament will be held at the beautiful Poipu Bay Golf Course with shotgun starting at 8am. Golf registration forms will be given by email request to leo1hi@yahoo.com, and can also be picked up at the Waimea High School front office.



THE ANNUAL WAFF MEMBERSHIP MEETING AND AWARDS DINNER

The night was opened with WHS ROTC Color Guard and welcomed by our emcee Brycen Hiraoka. The dinner was held in the school cafeteria. The Alumni Chefs and WAFF members prepared a delicious luau dinner with all the fixings. Friends and family of our Spirit Awardees, Mahina Aguay, Josie Pablo and Laurel Loo enjoyed the ono food and evening. Everyone enjoyed the nostalgic music by Taste of Harmony.

Aloha!

Waimea Alumni & Friends Foundation extends its sincerest mahalo to all the golfers, sponsors and donors of the **3RD ANNUAL WAFF GOLF TOURNAMENT** held on October 15, 2016 at the Puakea Golf Course. This is a fundraiser for the annual scholarships given each year to deserving Waimea High School graduates. Because of your generous donation and support of the golf tournament, this graduation year (2017), WAFF will present 4 scholarship awards to deserving seniors for \$1,000.

The winners of the golf tournament were:



1st Place Lance Nakata & Royce Ijima



3rd Place Sean Jardin & Stan Kua



2nd Place Jimmy & Kamu Kawaihalau (father & son)



4th Place Dino & DJ Pabre (father & son)

- The **WAFF Annual Meeting Luau** will begin at 6pm at the Waimea High School Cafeteria. (Doors open at 5pm) There will be great entertainment and delicious food. Prizes for placement in the golf tournament will also be awarded at the dinner. So plan your day for golfing and lots of fun, food, and entertainment at this year's **WAFF Golf Tournament** and **WAFF Luau**.

Mahalo, *Leo Anguay*
GOLF TOURNAMENT DIRECTOR



WHS Class of 1964
70TH BIRTHDAY REUNION IN VEGAS

waimea Alumni & Friends Foundation



FED ID #99-0216138

NAME: _____
(LAST) (FIRST) (MAIDEN)

CLASS OF _____
If you are not alumnus but would like to join the Foundation, please indicate your affiliation:
 (e.g. WHS faculty or staff, parent of alumnus, friends of WHS etc.)

MAILING ADDRESS: _____

TELEPHONE(S) _____

Home Work Cell _____

EMAIL ADDRESS: _____

Please accept my contribution(s) for:

- \$ _____ WAFF Membership {\$10/year}
- \$ _____ Lifetime WAFF Membership {\$200}
- \$ _____ WAFF Donation
{includes scholarships, school grants}
- \$ _____ WHS Cafeteria Acousticing
- \$ _____ TOTAL ENCLOSED

Check any of the following as appropriate:

- Purchase tickets for WAFF Awards Dinner & Meeting on **Saturday, August 19, 2017 @ \$20 each** • Pick up at ticket table.
- I would like to participate in the **WAFF Golf Tournament Saturday, August 19, 2017**, Poipu Bay Golf Course
Contact: leo1hi@yahoo.com / 639-2039 / waffkauai.org
- I would like to make a nomination for 2018 WAFF Spirit Award. My nomination letter is included.
- I would like to be a part of the *(Membership, Finance, Volunteer, Communication)* Committee.
- Please email my newsletter instead of mailing a hard copy.

Please make check/money order payable to **WAFF**.
 Mail filled out form with check/money order to:
Waimea Alumni & Friends Foundation
 P.O. Box 478 • Waimea, HI 96796-0478 • web: waffkauai.org
[waimea.alumni.friends@groups.facebook.com](https://www.facebook.com/waimea.alumni.friends@groups.facebook.com)

COOKBOOK & T-SHIRT ORDER FORM

SIZE	navy blue	royal blue
	qty	qty
small		
medium		
large		
x-large		
xx-large		
	total t-shirts	\$
	x \$10.00	
WAFF CookBook		\$12.00
shipping – flat rate priority mail (1-2 shirts) <small>(neighbor islands & conus)</small>		\$7.00
total enclosed		\$

PLEASE PRINT - NAME: _____

PLEASE PRINT - MAILING ADDRESS: _____

EMAIL ADDRESS _____@_____



FRONT



BACK



waimea Alumni & Friends Foundation

4TH ANNUAL GOLF TOURNAMENT ENTRY FORM

DATE: Saturday, August 19, 2017

PLACE: Poipu Bay Golf Course

DATE: Check in at 7:00 am • Shot gun start at 8:00 am

ENTRY FEE: \$110.00 (includes: green fees, cart & bento snack). WAFF Annual Luau will follow that evening at the WHS Cafeteria. Tickets are available at the Golf Tournament or at the Luau for \$20. Ono food and great entertainment. Doors will open at 4 pm and dinner served at 6 pm. Golf winners will be announced at dinner Luau. Need not be present to win

FORMAT: Tournament play will be 2-man scramble. Players may purchase up to four (4) mulligans at \$5.00/each. Proceeds from mulligans will go towards Waimea High School golf team uniforms. There will also be specialty holes for cash prizes and a special fundraiser game for WHS golf team. Tournament rules and specialty holes print outs will be handed out at check-in.

HANDICAP: Teams will play at 20% of combined handicap
 Maximum Handicap: Womens: 30 Men: 24

SPONSOR: \$500 Silver sponsor • \$300 Bronze sponsor • \$200 Prize sponsor
 \$100 Hole sponsor. See attached sponsor form for more details.

* **ENTRY FORM:** Please complete, and return with payment (*checks payable to WAFF; no cash please*) to: Leo Anguay, PO Box 464, Waimea 96796 or drop off at WHS Office. Any questions? Please call Leo at 808-639-2039.

PLAYER 1 _____

TELEPHONE _____

HANDICAP _____ MULLIGANS: 4 MAX. @ \$5 ea. _____

PLAYER 2 _____

TELEPHONE _____

HANDICAP _____ MULLIGANS: 4 MAX. @ \$5 ea. _____

SPONSORSHIP: \$ _____ MULLIGANS: \$ _____ TOTAL ENCLOSED: \$ _____

Tournament Committee:
 Leo Anguay
 Mahina Anguay

Contact:
 Leo Anguay
 Tournament Chair
 808-639-2039

EMAIL:
 Leo1hi@yahoo.com

***Mailing Address:**
 Leo Anguay
 PO Box 464
 Waimea, HI 96796

Make checks payable to WAFF

Waimea Alumni & Friends Foundation is dedicated to promoting and developing educational opportunities at Waimea High School by raising funds for scholarships, innovative school projects and capital improvements. By involving alumni and friends, we strengthen relationships with each other, Waimea High School, and the Westside community. We encourage you to join WAFF and to help support Waimea High School.